

MEDICAL PACKAGING INC. Pak-EDGE™ UD BARCODE LABELING SOFTWARE

DECREASE PACKAGING COSTS

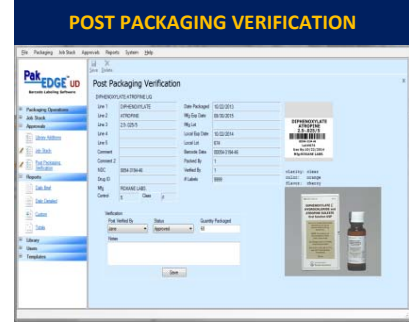
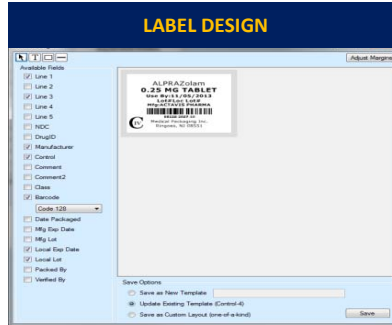
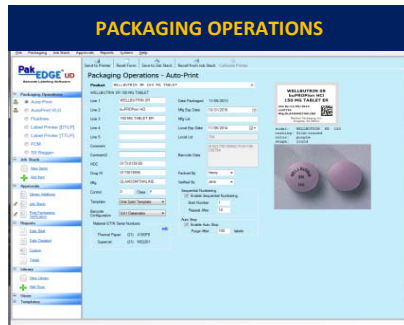
INCREASE OPERATIONAL EFFICIENCY

REDUCE MEDICATION ERRORS



Advanced barcode labeling software for Medical Packaging Inc. (MPI)'s Bar Code-Plus™ suite of packaging solutions is now optimized for use with Microsoft Windows® 7 or higher. Designed to increase operational efficiency and reduce medication packaging errors, Pak-EDGE™ UD Barcode Labeling Software is optionally integrated with the First DataBank™ drug data, imprints, and images library* to assist the hospital pharmacy with compliance to Joint Commission Standards and National Patient Safety Goals.

SAMPLE PACKAGING SCREENS



Also available in Spanish, French and Portuguese.

Advanced Bar Coding Capabilities and Configurations

1D and 2D Barcode Capabilities including Data Matrix, Aztec and GS1 formats. Automatically generates 11 Digit NDC's.

Enhanced Tall Man Lettering option searches for every occurrence of the drug and automatically prompts the user to accept Tall Man lettering suggestions.

Automatic Calculation of Default Shelf Life and Short Term Calculations including suggested expiration options for exact day or last day of the month. Calculated date will never exceed the shelf life of the medication.

Advanced Barcode Builder allows users to add fields and delimiters to create complex linear or 2D barcodes. May include expiration date and lot numbers or any combination of fields.

Enhanced Security, Password Controls and Reporting

Tiered Security Levels provide additional safety in packaging by establishing password and security controls at three separate levels – Technician, Verifier and Administrator.

Approval Batches: Print jobs, library additions and post checks can be queued for approval.

Comprehensive Management Reports including: Daily Brief, Daily Detailed Report, Custom, Totals

Digital Package Retention Feature retains digital image of package label as it was printed.

Lot Traceability for drugs and materials.

Automatic system back-up feature.

Welcome Screen keeps user informed of on-line updates, recent news and feature enhancements.

Master Drug Formulary Accessing First DataBank™ Drug Data, Imprints and Images Library

Single Drug Library with comprehensive sorting and search capabilities.

First DataBank™ includes:

- Source Drug Library including:
 - Generic Name, Trade Name, Strength, Measure and Form, NDC #, Manufacturer Name, Control Number, Drug Class Code
- Image Database
- Imprints Module
- Mapping Tool

*First DataBank™ integration is optional and offered to US/NDC customers only. Annual renewal fees apply.

Label Designer Tool - fully customizable label formats. Provides the ability to create and store custom templates or "one of a kind" labels.

- WYSIWYG Editor
- Windows® Fonts
- Default Templates
- Drawing Tools

Label Preview - provides the ability to see the final label layout prior to printing.

Technical Requirements

Computer with Windows® 7 operating system or higher.

5 GB Hard Drive Space, 2 GB RAM

Available USB Ports, Internet Access and DVD Rom Drive Required

Desktop printer for reports and 2D barcode scanner recommended.

On-going technical support via phone is provided by MPI's Technical Support Department at no additional charge to the user.

Network Ready Version

Client-Server Configuration:

- Consolidated Database
- Remote Post Packaging Verification
- Remote Drug Addition Approvals
- Job Stacking Approvals
- Template Administration and Design
- Software Administration

All MPI packaging systems are classified as US FDA 510(k) exempt and require the use of MPI authorized disposable materials.

To request information, contact:
sales@medpak.com

Bar Code-Plus and Pak-EDGE™ UD are trademark of Medical Packaging Inc. Windows® is a registered trademark of Microsoft. First DataBank™ is a trademark of First DataBank.



8 Kings Court | Flemington | New Jersey | 08822 | USA
Toll-Free.800.257.5282 | Phone.609.466.8991 | Fax.609.466.3775 | www.medpak.com



071515