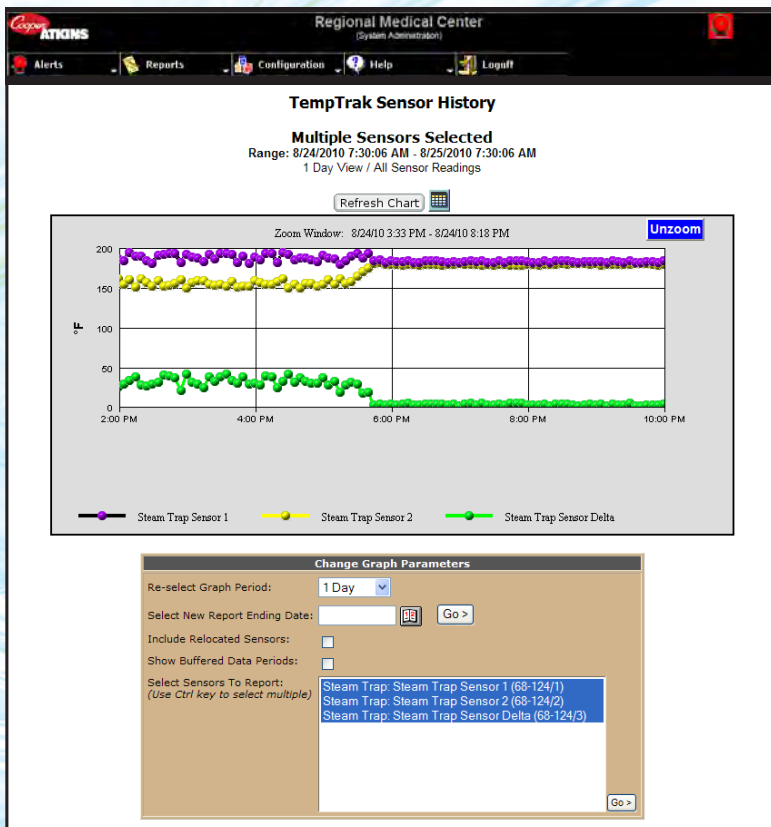


Wireless Steam Trap Monitoring

- **Are you aware of the amount of energy you are losing when a steam trap fails?**
- **How much does this cost your facility each year?**
- **Monitor your steam traps and know they are performing at optimum efficiency levels**



Manual inspection and maintenance of your steam traps is time consuming and outsourcing auditing services can be costly.

The Cooper-Atkins Steam Trap Monitoring System will provide 24 / 7 remote wireless monitoring, saving energy cost, labor and time.

Real time alerts and automatic notifications with corrective action allow the facilities mechanics / technicians to respond only to failing steam traps, eliminating manual audits and inspections.



Features:

- 24/7 remote wireless monitoring
- Real-time alerts and automatic notifications of defective steam traps by location
- Corrective actions of alerts can be tracked by time, user and action
- Operates within the 900 MHZ band width range
- Data seamless and easily integrates with TempTrakTM version 4.4 BACnet compatible software
- FTC (FCC) part 15 compliant
- Transmitter enclosed in ABS plastic housing with two 3' TeflonTM wires each containing aluminum housed thermistor sensors to perform accurately in diverse ambient environments
- Will monitor pipe temperatures up to 350°F
- Battery type: 2/3 A, Size: LiMnO2, Life: 2-5 years

Benefits:

- Alerts provide immediate notification of problems
- Simple installation and setup
- Multiple types of steam traps can be monitored with one system to quickly detect steam trap failures
- Probes can be mounted on various pipe sizes in hard to reach areas
- Save energy cost, labor and time
- Reduce or eliminates manual steam trap audits
- Easily monitor impossible to reach steam traps

Steam Trap Alarm

Regional Medical Center
(System Administration)

TempTrak Current Sensor Readings
Steam Trap

Show Only Out-of-Range Sensors
 Use Dial Display
 Show Group Audit Charts

All Group Summary REFRESH

Group: Steam Trap

Steam Trap Sensor 1 TEMPERATURE	Steam Trap Sensor 2 TEMPERATURE	Steam Trap Sensor Delta TEMPERATURE
185.7°F	182.2°F	3.6°F
Range: 170.0 - 195.0 °F 8/24/2010 5:29:38 PM Sensor ID: 68-124/1	Range: 150.0 - 175.0 °F 8/24/2010 5:29:38 PM Sensor ID: 68-124/2	Range: 10.0 - 50.0 °F 8/24/2010 5:29:38 PM Sensor ID: 68-124/3

Steam Trap Alerts

Intelli-Ware Notification: Steam Trap Sensor 2 (ALL)

Alert Time: 8/24/2010
Location: Steam Trap Sensor 2 (ALL)

!! TEMP TRAK ALERT !! Steam Trap Sensor 2 In ALL: at 182.2 (Normal Range 150.0-175.0)

Close Open Alert Window

Intelli-Ware Notification: Steam Trap Sensor Delta (ALL)

Alert Time: 8/24/2010
Location: Steam Trap Sensor Delta (ALL)

!! TEMP TRAK ALERT !! Steam Trap Sensor Delta In ALL: at 3.6 (Normal Range 10.0-50.0)

Close Open Alert Window